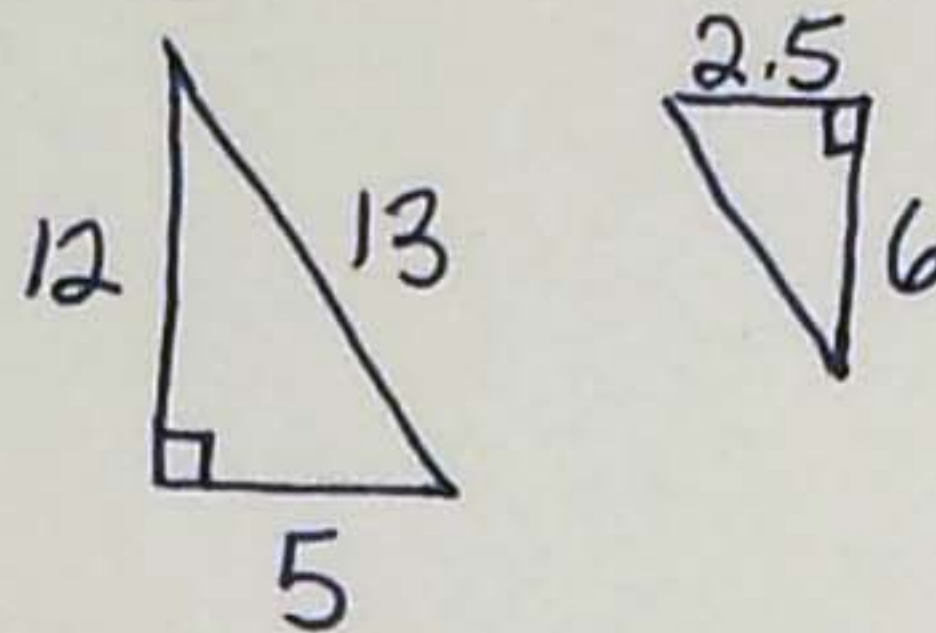


Chapter 7 Test Review

① SOLVE FOR x :

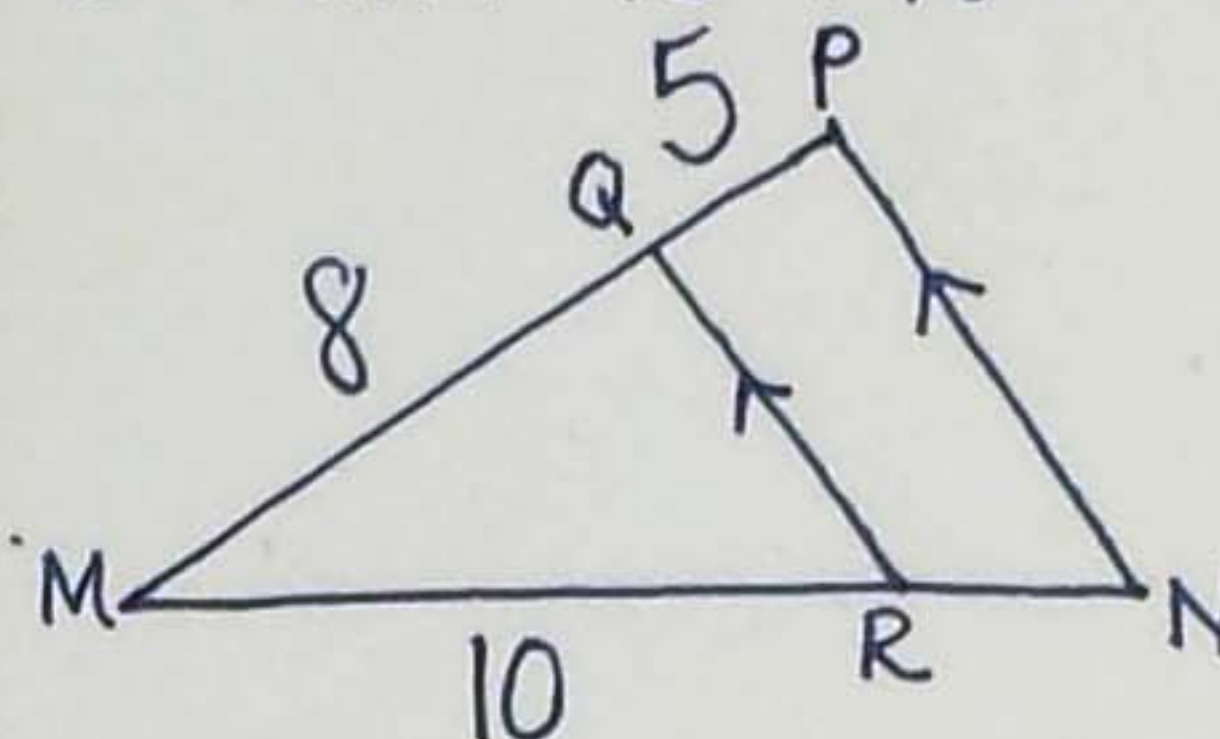
$$\frac{x-4}{5} = \frac{20}{x-4}$$

⑤ WHAT SIMILARITY PROPERTY COULD YOU USE TO PROVE THE TRIANGLES SIMILAR?



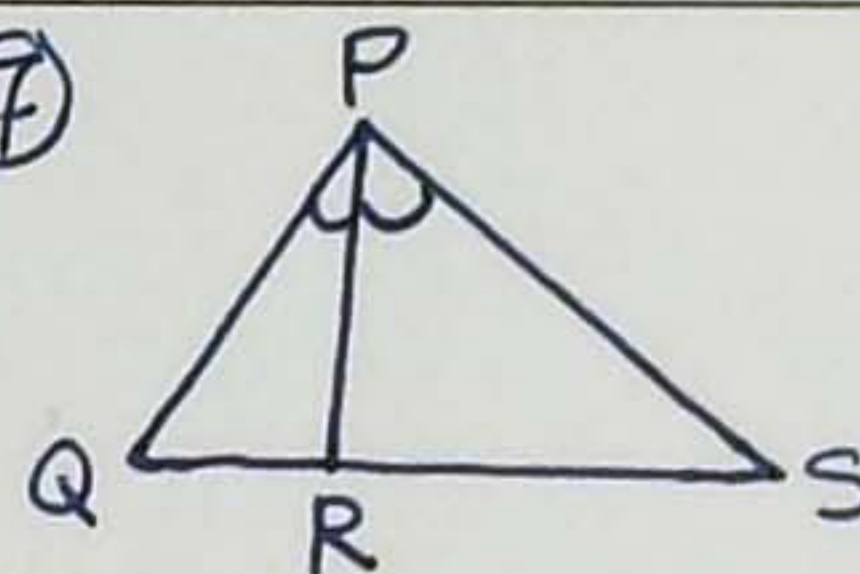
② FIND THE RATIO OF x TO y IF $6x = 27y$

⑥ WHAT IS \overline{RN} ?



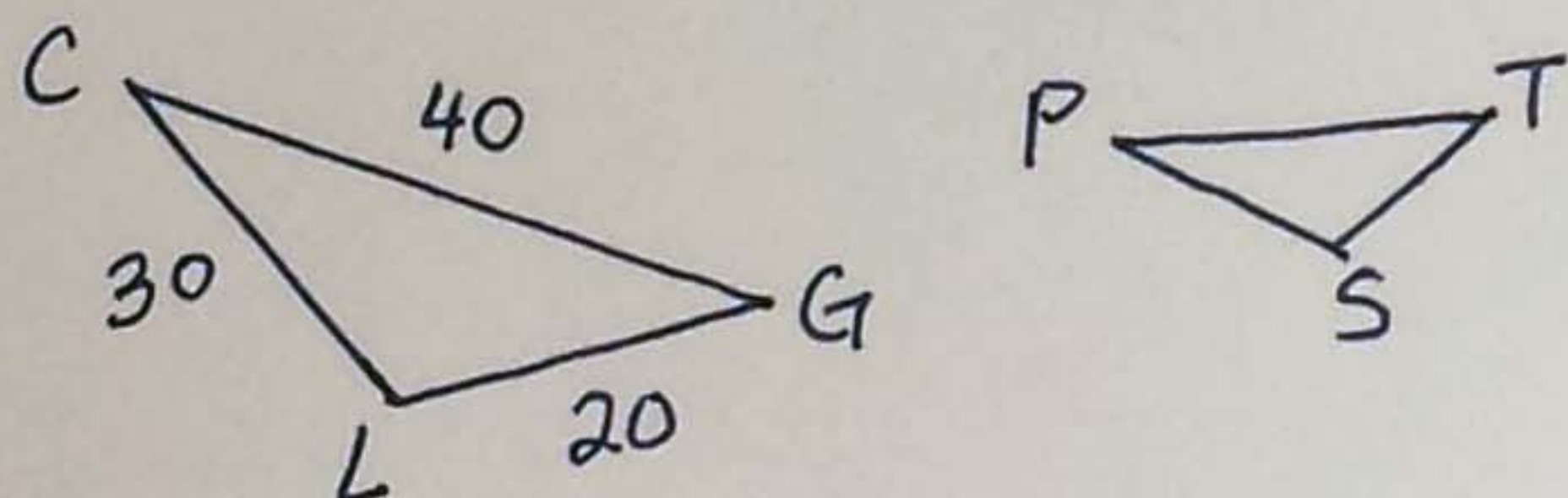
③ THE RATIO OF THE SIDES OF A QUADRILATERAL ARE $2:4:5:7$. THE PERIMETER IS 36 FT. WHAT IS THE LENGTH OF THE SHORTEST SIDE?

⑦

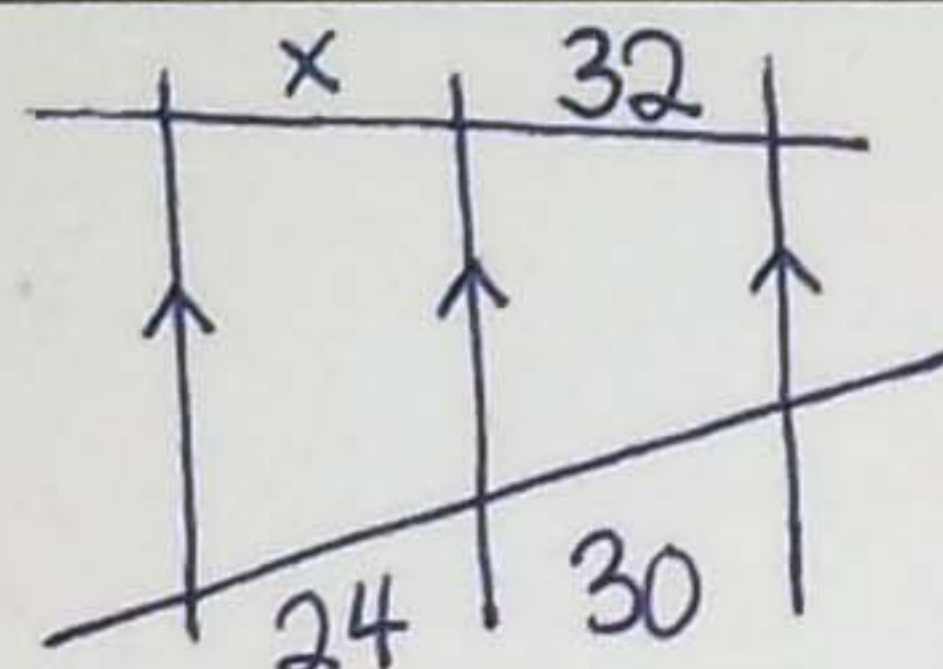


$PQ = 12$, $PS = 16$, $QR = x-2$, $RS = x+1$
WHAT IS \overline{QR} ?

④ $\triangle CGL \sim \triangle TPS$. THE SIMILARITY RATIO IS $\frac{5}{2}$. WHAT IS THE LENGTH OF SIDE PS ?



⑧

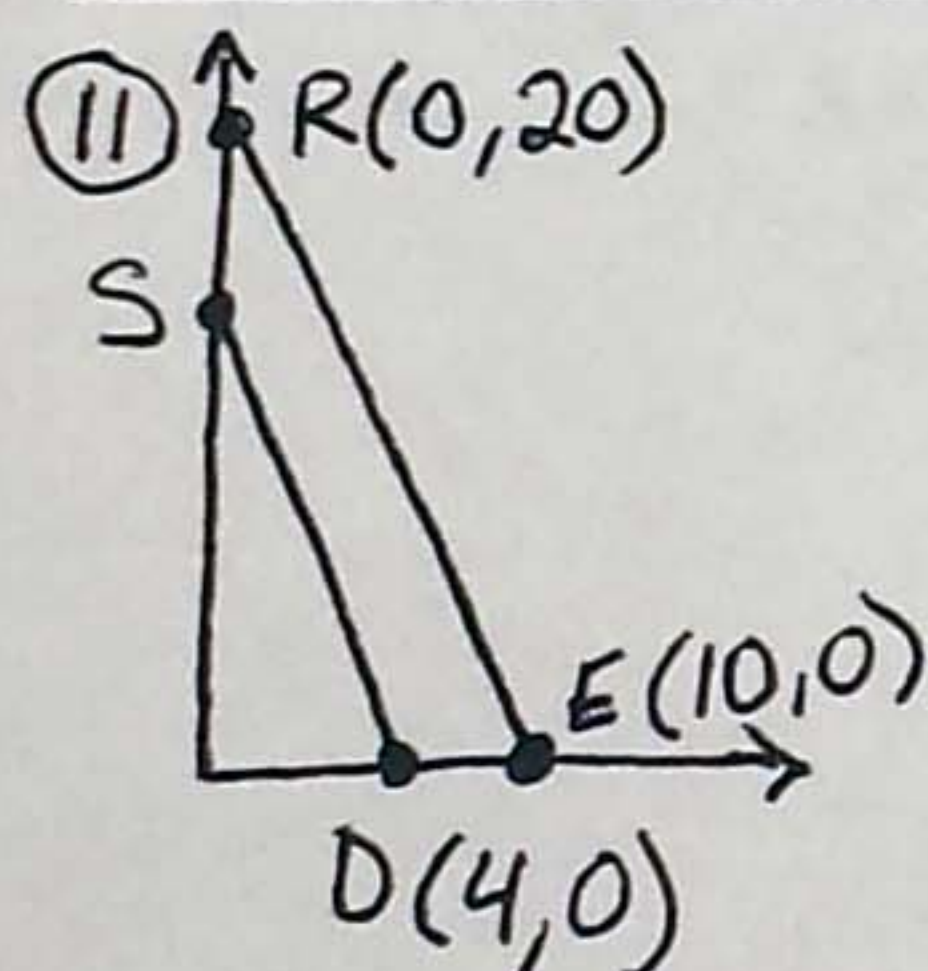


FIND THE LENGTH OF x

Chapter 7 Test Review

- ⑨ THE RATIO OF THE PERIMETERS OF $\triangle ABC$ AND $\triangle FGH$ IS $\frac{9}{5}$. WHAT IS THE RATIO OF THE AREAS?

- ⑩ A SCALE DRAWING OF A HOUSE IS 1 IN: 48 FT. WHAT IS THE SCALE DRAWING SIZE IF THE ACTUAL SIZE IS 36 FT.?



- WHAT ARE THE COORDINATES OF POINT S ? WHAT IS THE SCALE FACTOR?